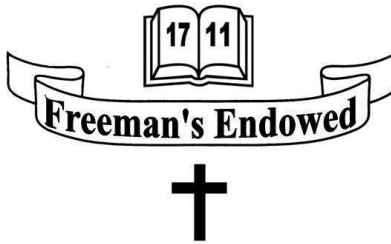


# The Essential Guide to Starting at Freeman's Endowed Church of England Junior Academy



e-mail: [admin@freemansendowed.org](mailto:admin@freemansendowed.org)

[www.freemansendowed.org](http://www.freemansendowed.org)

## Welcome to Freeman's Junior Academy!



We are delighted to welcome you and your child to our school. We are a two form entry, Church of England Junior Academy and are open to children of all cultures and faiths that make up the lively, cosmopolitan community that is Wellingborough. Freeman's joined the Peterborough Diocese Education Trust in November 2019, and this has provided the school with valuable guidance, support, challenge, and wider opportunities for our staff and pupils. We work closely with other schools in the Trust, most notably St Barnabas School. The school prides itself on its inclusive, nurturing approach and works hard to promote a friendly, welcoming environment for our families and the wider school community.

In June 2011, we celebrated 300 years since our endowment in 1711. The school was originally housed in a building located on the present site of Morrison's supermarket, but in 1967 moved to our lovely Victorian building which was originally Westfield Boys School. Now extended in a sympathetic manner, the academy continues to be a thriving learning community of good standing in the town.

We hope this short guide gives you some of the essential information about our academy. The full prospectus will be available from our office together with much more information such as newsletters, policies and a photo gallery.

Please contact the academy if you have any further questions or queries - I look forward to welcoming you and your child very soon.

Yours sincerely,

Mrs Fiona Hull  
Head teacher

### **The Academy Day**

<b>Entry to class</b>	08.45 am (Reading Time)
<b>Register</b>	08.55 am
<b>First lesson</b>	09.15am
<b>Morning break</b>	Yr 3 & 4: 10.15am Yr 5 & 6: 10.35am
<b>Second lesson</b>	Yr 3 & 4: 10.30 Yr 5 & 6: 10.50am
<b>Lunch time</b>	12.00pm
<b>Third session</b>	1.00pm
<b>End of school day</b>	3.20pm

Entry to the playground is from Brickhill Road. Please note that for security reasons parents and carers are not allowed to walk across the playground in the morning. For access to the office, please come in via the Brickhill Road gates. The Westfield Road gates are opened at the end of the school day. Year 4, and 5 children leave school from the entrance to the Victorian cloakrooms., Year 6 leave via their classroom doors and Year 3 children leave by their classroom door during the first half term at Freeman's so that we can check they have been safely collected. If Year 3 children have siblings in other year groups, we would kindly ask parents to collect their Year 3 child first before meeting older siblings in the playground.

### **Breakfast Club**

Breakfast club opens at 8.00 a.m. and serves toast, cereal, fruit, fruit juices etc, at a cost of £2.60 per day. The children have breakfast, play games and usually spend some time outside in the playground; they are taken to their classroom at 8.45am ready for the start of the school day. Application forms are from the academy office.



### **Lunch**

Packed lunches should be brought by the children in a named container. Please make sure your child has a balanced lunch, including a drink. Please do not send glass bottles, fizzy drinks, or cans. Children should not bring any sweets to school. Hot meals are available at the academy – information about how to order hot lunches is available from the school office.

**Please register for free school meals if eligible as the school receives extra funding for each pupil registered.**



# School Uniform

## Standard uniform

(Girls and Boys)

White school shirt with collar

School tie

Navy v-neck jumper or cardigan

Grey trousers/skirt/shorts

Grey socks/tights

Black flat sensible school shoes.



## Summer option

(Easter - October, if desired)

**Girls:** White/navy gingham summer dress (or white polo with grey skirt/culottes) with white socks.

**Boys:** White short sleeved shirt (worn with tie) or white Freeman's polo shirt (worn without tie) and grey shorts, grey socks.



**Blazers:** Navy blazers are optional with standard uniform and are also available.

## PE Kit

Is the same for both boys and girls

Sky blue Freeman's T-shirt

Navy shorts

Plain navy jogging suit or track suit for cold weather (no hoodies).



School uniform can be ordered at the uniform shop on Olympic Way. You may also order on-line at [www.uniformshopwellingborough.co.uk](http://www.uniformshopwellingborough.co.uk)



## Behaviour Policy

Behaviour in the academy is the responsibility of the whole community including children, teaching staff, non-teaching staff, parents and governors. To this end, the academy staff and its Governing Body, have produced a detailed policy for behaviour within the academy. A full copy of our Behaviour Policy is available on the web site. It has been drawn up based on a firm belief that our children behave best when:

- they work in a pleasant, stimulating and ordered environment;
- the work is well matched to their individual needs;
- the ethos of mutual respect and care is nurtured;
- there are high expectations in work and behaviour;
- they work within defined boundaries and follow the school rules.

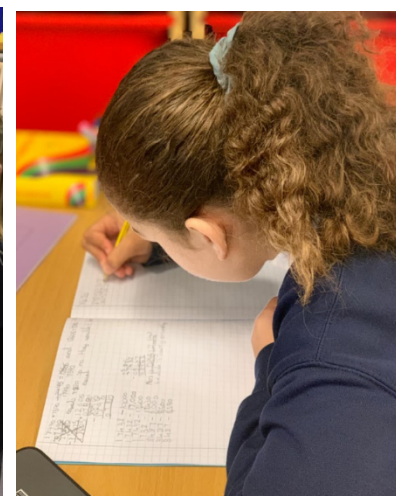
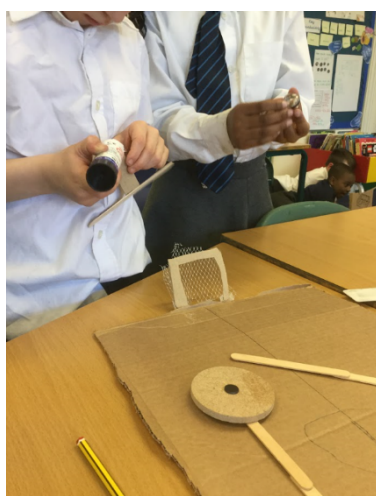


## Academy Organisation and Curriculum

The children at Freeman's are grouped in eight classes, two in each year group. Years 3 and 6 are in the new part of the school and Years 4 and 5 are in the rooms in the Victorian part of the school.

Most of your children's learning will take place within their registration or class group. Within this, a wide variety of teaching approaches will involve children working and learning in many situations. Children may sometimes be grouped in terms of similar ability or at other times in mixed ability grouping. Our approach to managing and organising your child's learning is a flexible one, depending on the nature of the activity being undertaken.

Children enjoy a range of interesting and exciting activities with many enriched curriculum opportunities such as re-enactment groups, workshops, educational excursions, craft days, music tuition and other special events.



## Religious Education

Our status as a Church of England Academy is very important to us and plays a significant role in our academy ethos. All of our pupils, from all faiths and cultures, take part in collective worship. Collective Worship in our academy is based on the teachings of Christ and traditions of the Christian Church. However, we aim to conduct our Collective Worship in a manner that is sensitive to the individual faith and beliefs of all members of the academy. Our RE lessons provide high quality teaching and learning about a range of different world religions, and children are encouraged to explore their own beliefs and faith in a safe, nurturing environment.

*Note: Under the provision of the 1944 Education Act and the 1988 Education Reform Act parents may request their children be exempt from Religious Education and Religious Worship in school. No parents currently assert this right.*

## Our Academy Vision and Values

We are currently reviewing our school vision and values, to ensure that our school is promoting and developing our distinctively Christian ethos. Our new vision and values will underpin all of the work that we do at the academy, and will inform policies such as our Behaviour Policy and our Teaching and Learning Policy. We have included a response sheet in the pack for you to contribute your views to the process of developing a new vision and set of associated value.

## Extra-Curricular Activities

Charging and remissions policy.

We offer children a wide range of extra-curricular activities to enrich their learning and create wider learning experiences. In accordance with the Education Reform Act 1988, this school has established a policy whereby visits and activities undertaken by the children during the school day are funded through voluntary contributions by parents / carers. This puts the onus of goodwill on the parent / carer, as without your contribution, the wide variety of active learning that takes place beyond the classroom would not be possible.

Activities include:

Trips to places of interest for field study  
Visiting theatre and re – enactment groups  
Residential visit Yr 4



Residential visit Yr 6  
 Visiting artists / musicians  
 Visits to the local library and museum

### **Wider Opportunities in Music**

All Year 3 children participate in NMPAT programme which gives them 10 weeks free study of a string instrument. Thereafter, opportunities arise for paid study through the peripatetic music service. Pupils can have tuition in drums, strings, woodwind, brass and guitar.

### **Clubs**

There are a wide variety of clubs, led by staff, that children can participate in. These change from year to year but typical examples are: choir; netball; needlework; and gardening. Fees are kept low and some clubs are free. There are also some clubs run by private organisations that charge a fee such as the gymnastics club, Hotshots basketball and football club.

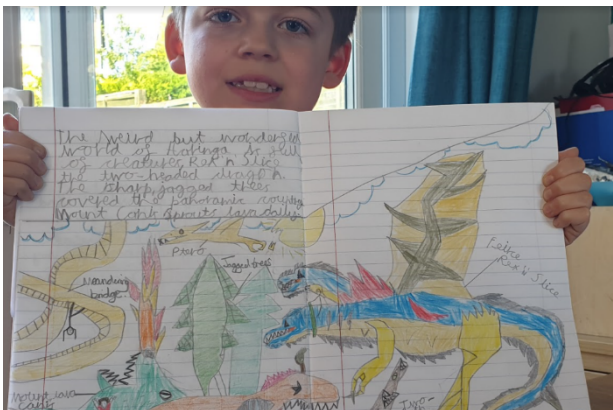
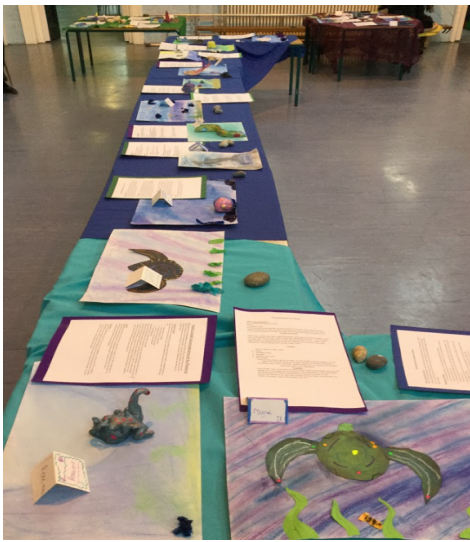
## **Teachers and Classes 2020 – 2021**

Yr 3PC	Miss P Clements	Yr 3 RH	Miss R Hicks
Yr 4SS	Mrs S Sadler	Yr 4LG/KH	Mrs L Graves and Mrs K Holder
Yr 5JB	Mrs J Berkshire	Yr 5KM	Miss K Mack
Yr 5	Miss V Elwood	Yr 6JH	Mr J Healy/Mrs Troisi
RE teaching/PPA cover: Miss S Blunt			

Administrator	Mrs C McIvor
Bursar	Mrs C Everson
Caretaker	Mr A Hurst



A group of children in white robes and hoods, some holding sheep puppets, performing in a church. In the foreground, several children wear sheep masks on sticks.





### Forest Dragon

Beneath the fern-green forest punched a medium size dragon in its cozy, huge nest. The dragon was like no other dragon this dragon was a forest dragon with candy-green body, head with cool stripes on its back and green spiky ear listening for prey. This beast, is very happy live on its own but is cannot survive in the cold weather for one second because it can freeze to death. The dragon can fit round your shoulders so you can take it wherever you go. This animal, which has razor sharp teeth, can move very fast because it has strong legs to move with.



When it is angry, it can do a lot of naughty things like breathe sharp shards of grass and then cover the grass on the ground and set the grass on fire. It can has powerful legs so it can run fast, it has muscular wing with strong lines through them and the forest dragon has a thick, destructive tail with lots of miniscule scales on it. The eyes, which were where fire-orange eyes, glared in the rain from the bushy trees and the blue sky.

Thank you for taking the time to read the information in this booklet. I look forward to meeting you soon  
Mrs Fiona Hull, Head teacher.